

ELEMENTS & PRINCIPLES OF ART

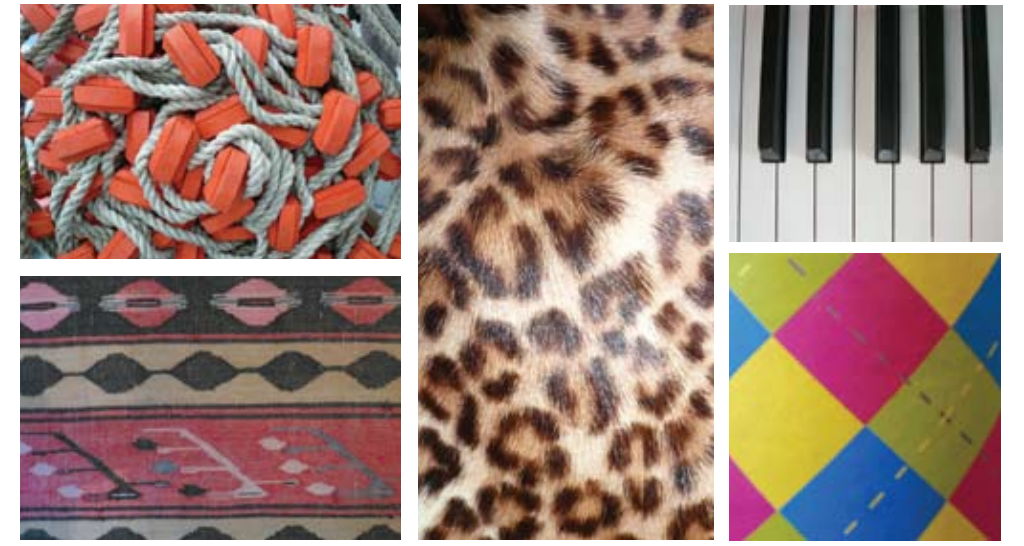
LINE

Line is the path of a point moving through space



PATTERN

Pattern refers to the repetition or reoccurrence of a design element, exact or varied, which establishes a visual beat.



SHAPE / FORM



Shape implies spatial form and is usually perceived as two-dimensional. Form has depth, length, and width and resides in space. It is perceived as three-dimensional.

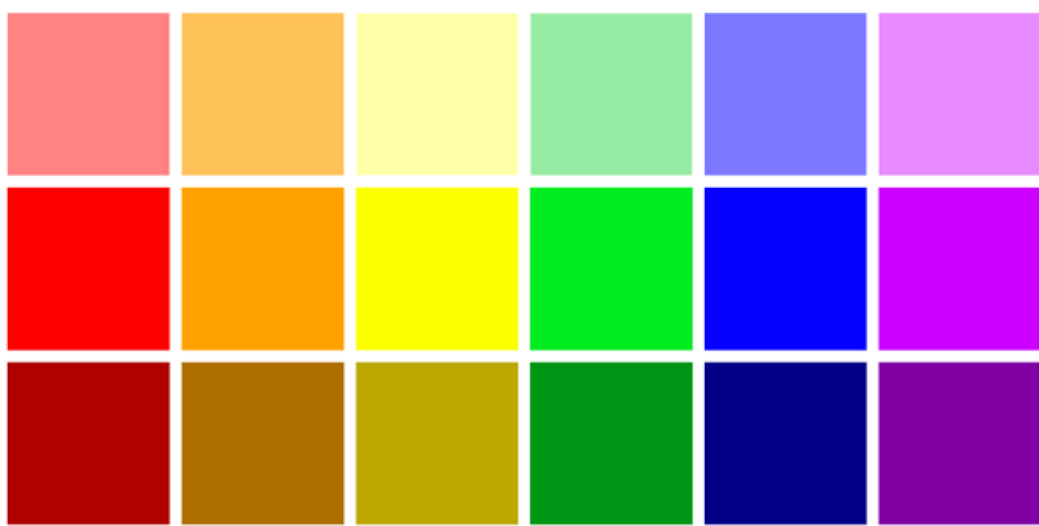
RHYTHM / MOVEMENT

Rhythm or movement refers to the suggestion of motion through the use of various elements.



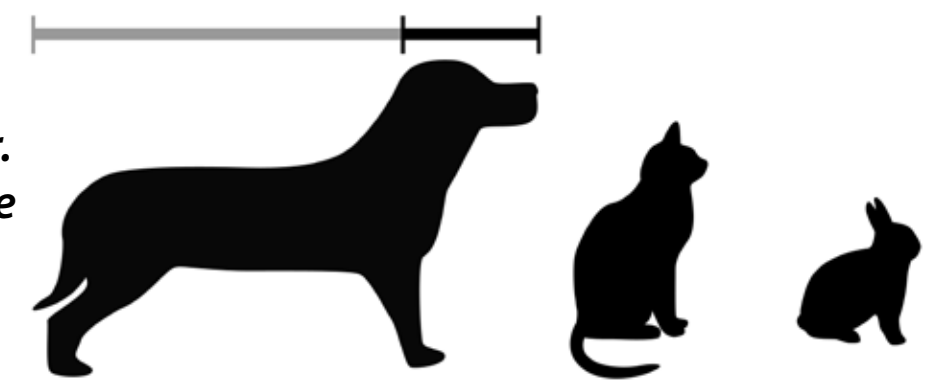
COLOR

Colors all come from the three primaries and black and white. They have three properties – hue, value, and intensity.



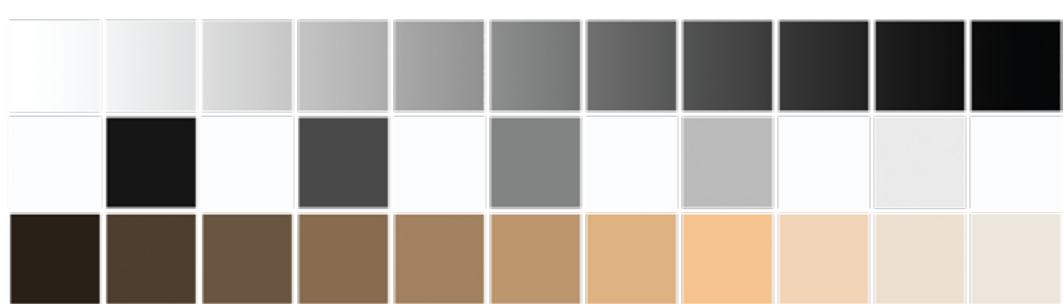
PROPORTION / SCALE

Proportion is the size relationship of parts to a whole and to one another. Scale refers to relating size to a constant, such as a human body.



VALUE

Value refers to relative lightness and darkness and is perceived in terms of varying levels of contrast.



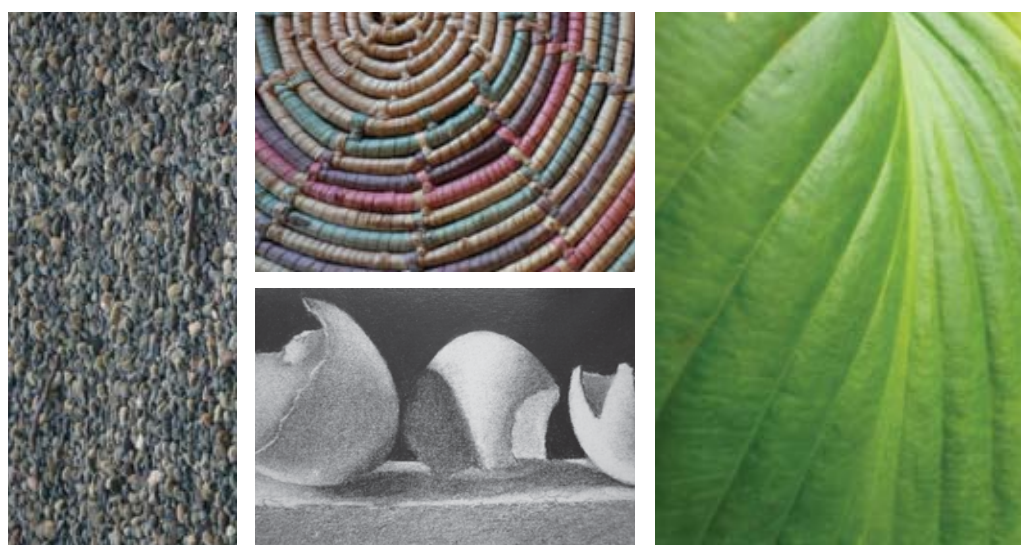
BALANCE

Balance is the impression of equilibrium in a pictorial or sculptural composition. Balance is often referred to as symmetrical, asymmetrical, or radial.



TEXTURE

Texture refers to the tactile qualities of a surface (actual) or to the visual representation of such surface qualities (implied).



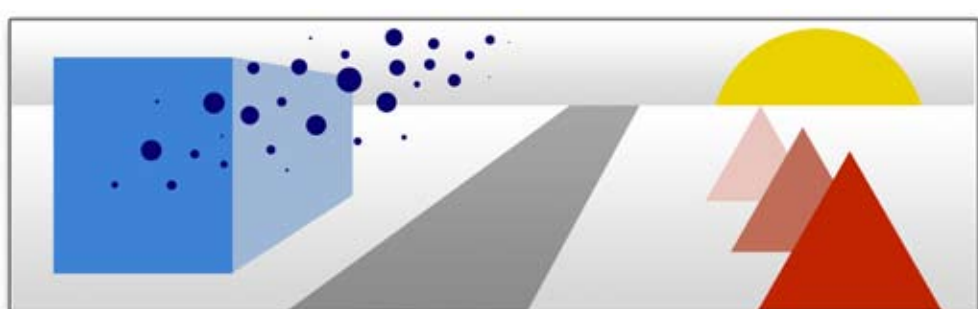
UNITY

Unity is achieved when the components of a work of art are perceived as harmonious, giving the work a sense of completion.



SPACE / PERSPECTIVE

Space refers to the area in which art is organized. Perspective is representing a volume of space or a 3-dimensional object on a flat surface.



EMPHASIS

Emphasis refers to the created center of interest, the place in an artwork where your eye first lands.

